

**This Shower:** 60"x36" shower floor with custom drain location & wall panels  
**Colour:** S09 White & AL4007 Jovette

## CUSTOM SHOWER CONSIDERATIONS

### 1. DIMENSIONS

Identify the length and width

### 2. TEXTURE & COLOUR

Choose desired colour and base texture

### 3. THRESHOLD & SIDE WALL PLACEMENT

Identify where your glass system door and panels will be for threshold placement. Identify which sides are against stud walls for side wall and bonded water dam placement.

### 4. DRAIN LOCATION & COVER SELECTION

Identify drain location dimensions and select drain cover style

### 5. WATER DAMS

Water dams are required and will be bonded to all stud wall locations for bases and floors



**Mr. Marble**

59 Ortona Court, Vaughan, ON, Canada

Phone: 905-669-3877

Fax: 905-760-2395

Toll-free: 1-866-MrMarble

(1-866-676-2725)

Email: [Info@mrmarble.com](mailto:Info@mrmarble.com)

[mrmarble.com](http://mrmarble.com)

*Carefully crafted with you in mind, our shower bases and floors are modern, easy to clean & beautiful. Our customization options allow you to create the dream bathroom you've been longing for.*

**Mr. Marble**

## SHOWER TYPE

Select the shower type you are interested in

### SHOWER FLOOR



- Minimalistic, low-profile & modern
- Beautifully sloped 1/8" lines toward drain centre
- No side walls (Thresholds/ramps can be added)
- Square drain cover

### SHOWER BASE



- Customize your base with your selection of threshold or thresholds, sidewalls and ramp locations
- Side walls of 2", 2.5", 3" or upgraded 4" available
- Square or round drain cover options

**Note:** Both shower bases and floors will have bonded water dams added wherever walls are located.

\*Standard options are available

## CUSTOMIZATION OPTIONS

### DRAIN COVER & LOCATION

Customize your drain location and enhance your shower with one of our optional square 5"x5" drain covers - available in 3 colours.



Stainless Steel



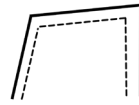
Matte Black



White

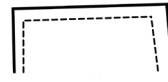
### THRESHOLD SELECTIONS

BLUNT



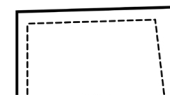
2", 2.5", 3" by 3" wide available with a textured finish and slight inward slope

U-STYLE



2", 2.5", 3" with a smooth textured finish at 4" wide

UPGRADED-U



Upgrade to 4" tall by 4" wide with a smooth textured finish

### SHOWER BASE SIDE WALLS

For shower bases, choose between our 3 side wall sizes.



2" or 2.5" tall x 1.5" wide

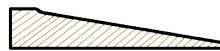


3" tall x 1.5" wide



Upgraded 4" tall x 1.5" wide

### RAMP OPTIONS



8" Ramp

1.5" tall x 8" w x max 72"

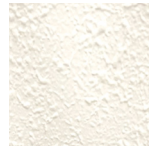


12" Ramp

1.5" tall x 12" w x max 72"

### FLOOR TEXTURES

TEXTURED



Non-slip, a finish that you can see and feel - like a heavy spackle

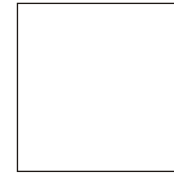
SLATE



Non-slip, minimalistic, and easy to clean

## COLOUR *New ALTRA Stone Colours*

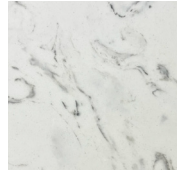
With 15 colours to choose from, we are sure to have the look to compliment your bathroom.



S09 STANDARD



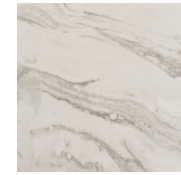
M09 STANDARD



M37 STANDARD



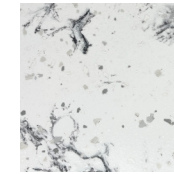
M39 STANDARD



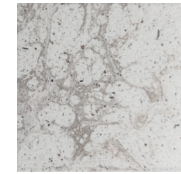
M815 FAWN



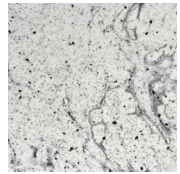
Onyx O 261



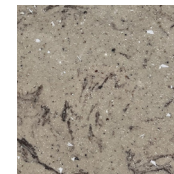
Nuna AL4003



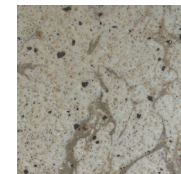
Yukon AL4001



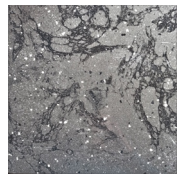
Jovette AL4007



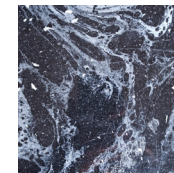
Tofino AL4006



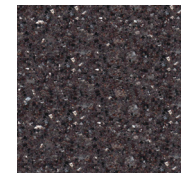
Hudson AL4005



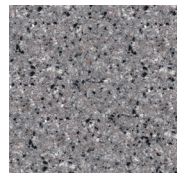
Tamaraka AL4002



Baffin AL4004



G Stone



W Smoke